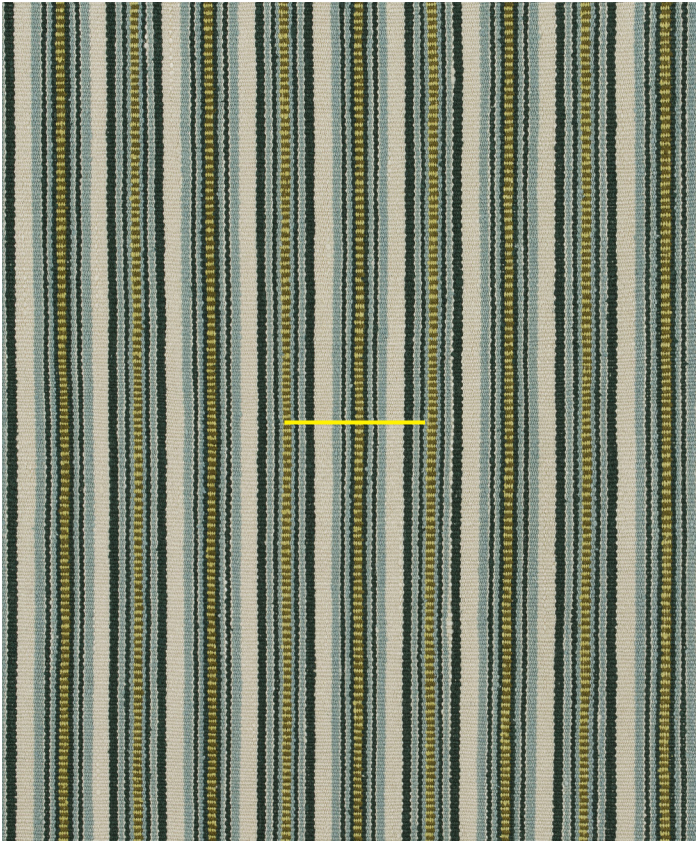


Sharang Tara Teal | BT-TA-03

Sharang Tara refers to a traditional design from south-eastern Bhutan, with colourful warp stripes on a white ground.



Design Sharang Tara

Colour Teal

Code BT-TA-03

Composition 100% Silk

Width 64cm / 25in

Repeat 4cm (h)
1.5in (h)

Weight 234g/sqm

Notes
.....
.....
.....



Sharang Tara Teal | BT-TA-03

www.namaysamay.com

